

# For Lease

## Custom One Homes Building

6939 Pine Arbor Drive, Cottage Grove MN 55016



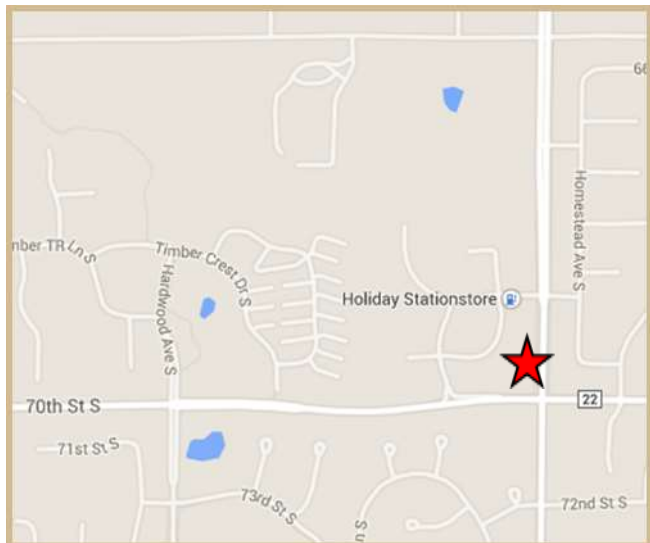
### PROPERTY DETAILS

#### Custom One Homes Building

**Size:** 10,184 SF  
**Space Available:** 2,552 SF  
**Year Built:** 2007  
**Lease Rates:** Negotiable  
**CAM:** \$4.07/SF  
**Taxes:** \$5.39/SF

- **Mixed development: Medical, Office & Retail**
- **Attractive single-story medical/office building**
- **On building signage possible**

### LOCATION



Mark Young  
Vice President, Sales and Leasing  
Direct | 651-233-2435  
Mobile | 651-307-2371

John Higgins  
Vice President, Sales and Leasing  
Direct | 651-209-0520  
Mobile | 612-702-3104

7300 Hudson Blvd., Suite 210  
Oakdale, MN 55128  
Main | 651-731-0708  
Fax | 651-735-1228  
[www.crossroadsproperties.net](http://www.crossroadsproperties.net)

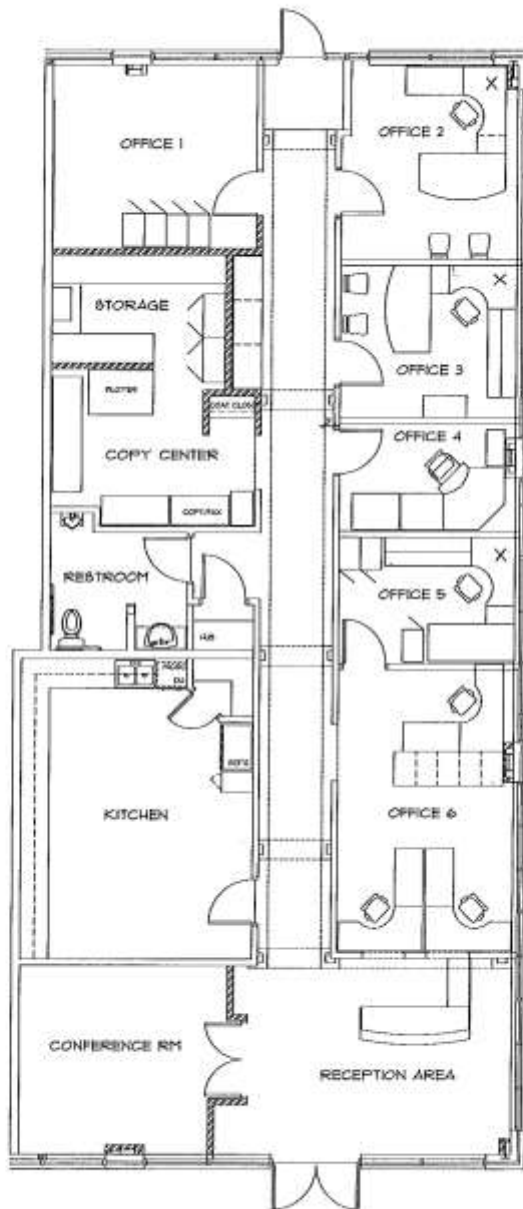
**CROSSROADS**  
**PROPERTIES**

# For Lease

## Custom One Homes Building

6939 Pine Arbor Drive, Cottage Grove MN 55016

### FLOOR PLAN



DESIGNED & BUILT BY  
1364 BONA STREET S.  
COTTAGE GROVE, MN  
55016  
PH. 951-498-8776  
FX. 951-498-8733

RESIDENCE FOR  
**CUSTOM ONE HOMES**  
6939 PINE ARBOR DR S SUITE 100  
COTTAGE GROVE MN 55016

PROJECT NO. FT. \_\_\_\_\_  
DRAWS (FLOOR) \_\_\_\_\_  
OFFICE \_\_\_\_\_  
PROJECT TEL. \_\_\_\_\_  
SHEET: \_\_\_\_\_  
1 of 1

Mark Young  
Vice President, Sales and Leasing  
Direct | 651-233-2435  
Mobile | 651-307-2371

John Higgins  
Vice President, Sales and Leasing  
Direct | 651-209-0520  
Mobile | 612-702-3104

7300 Hudson Blvd., Suite 210  
Oakdale, MN 55128  
Main | 651-731-0708  
Fax | 651-735-1228  
[www.crossroadsproperties.net](http://www.crossroadsproperties.net)



**For Lease**

**Custom One Homes Building**

6939 Pine Arbor Drive, Cottage Grove MN 55016

**SITE PLAN**



Mark Young  
Vice President, Sales and Leasing  
Direct | 651-233-2435  
Mobile | 651-307-2371

John Higgins  
Vice President, Sales and Leasing  
Direct | 651-209-0520  
Mobile | 612-702-3104

7300 Hudson Blvd., Suite 210  
Oakdale, MN 55128  
Main | 651-731-0708  
Fax | 651-735-1228  
www.crossroadsproperties.net

**CROSSROADS PROPERTIES** 